



POLAR HP

7030

Proiettore led per interni ed esterni. Corpo in alluminio pressofuso verniciato con polvere termoidurente poliestere anticorrosione colore silver o antracite, vetro temperato trasparente spessore 4 mm, guarnizione in silicone, driver elettronico 220-240V 50/60Hz. Prodotto in conformità alle vigenti norme EN / IEC 60598-1.

Indoor and outdoor led floodlight. Die cast aluminium body, coated with polyester anticorrosion powder, silver or anthracite color. 4 mm thick tempered transparent glass, silicon gasket, electronic driver 220-240V 50/60Hz. Manufactured in accordance with EN / IEC 60598-1.

CARATTERISTICHE / MAIN FEATURES

	Classe I Class I		CRI >80 CRI >90		EN / IEC 60598-1
	Terra Ground		Mac Adams 3		RG0/RG1
	Parete Wall		IK 08		L90-B10 >100.000 h
	Palo Pole		IP 66		Ball Test DIN 18032-3
	Soffitto Ceiling		10 kV Surge Protection		7 YEARS WARRANTY
			○ Silver / Silver ● Antracite / Anthracite		
			100% rigenerabile 100% regenerable		



CODIFICA CODICE / CODING

Art.	+	Mod.	+	°K (CRI)	+	W. tot.	+	Options	○ Silver	Options	● Antracite
7030		PR		2 = ambra (CRI >80)		040 120		GL = on/off		EL = on/off	
		CR		3 = 3000°K (CRI >80)		050 130		GD = dali		LD = dali	
		AR		4 = 4000°K (CRI >80)		060 150		GV = vetro infrangibile / shatterproof glass		VI = vetro infrangibile / shatterproof glass	
		RR		5 = 5000°K (CRI >80)		070 160		GA = vetro acidato / acid-etched glass		VA = vetro acidato / acid-etched glass	
				6 = 6500°K (CRI >80)		080 175		G2 = classe II / class II		E2 = classe II / class II	
				7 = 5700°K (CRI >80)		090 190					
				8 = 5700°K (CRI >90)		100					
				S = 4000°K (CRI >70)							
				R = 5700°K (CRI >70)							

Δ LUMEN

	°K	CRI	% Lm
2	ambra	> 80	-19.85%
3	3000	> 80	-5.28%
4	4000	> 80	standard
5	5000	> 80	+0.90%
6	6500	> 80	+0.00%
7	5700	> 80	+1.00%
8	5700	> 90	-13.13%
S	4000	> 70	+5.85%
R	5700	> 70	+5.88%

DOTAZIONE / STANDARD EQUIPMENT



- Cavo in neoprene H07RN-F 3x1mm² già cablato lunghezza 1000 mm.

- 1000 mm long H07RN-F 3x1mm² neoprene cable.

- Surge Protection da 10kV incluso.

- 10kV Surge Protection.



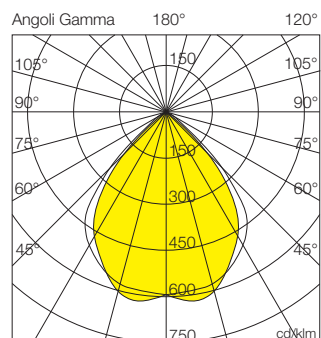
- Pressacavo con valvola anticondensa integrata.

- Cable gland with integrated anti-condensation valve.



POLAR HP

mod.PR



Ottica

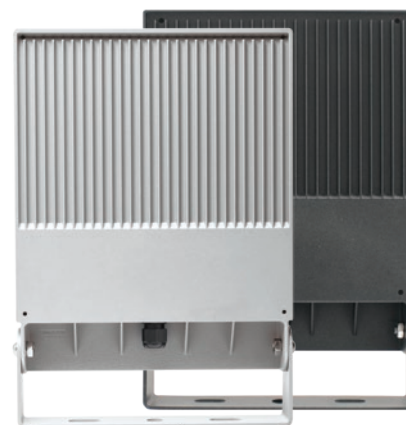
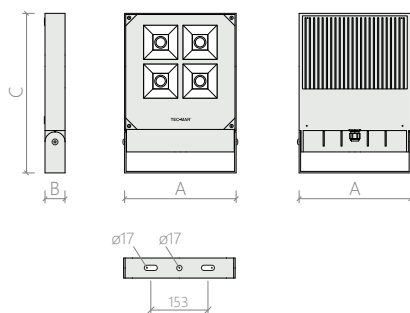
Riflettore simmetrico 90° in alluminio satinato.

Optic

90° wide beam matt satin aluminium reflector.

DIMENSIONI / DIMENSIONS

	A (mm)	B (mm)	C (mm)	Kg	☼
D1	295	55	425	5,6	0,126 m ²



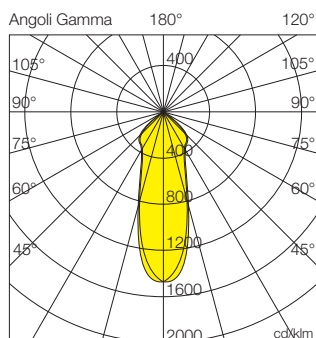
ESEMPIO CODIFICA CODICE 4000K - CRI>80 - ON/OFF
EXAMPLE OF ARTICLE CODING 4000K - CRI>80 - ON/OFF

PRESTAZIONI / PERFORMANCE

Code	W tot.	°K - CRI	Lm OUTPUT	Lm/W	dimension	Color
7030PR4040GL	40	4000K - CRI>80	7473	187	D1	○
7030PR4050GL	50	4000K - CRI>80	9286	186	D1	○
7030PR4060GL	60	4000K - CRI>80	11067	184	D1	○
7030PR4070GL	70	4000K - CRI>80	12798	183	D1	○
7030PR4080GL	80	4000K - CRI>80	15049	188	D1	○
7030PR4090GL	90	4000K - CRI>80	16579	184	D1	○
7030PR4100GL	100	4000K - CRI>80	18428	184	D1	○
7030PR4120GL	120	4000K - CRI>80	21133	176	D1	○
7030PR4130GL	130	4000K - CRI>80	22770	175	D1	○
7030PR4150GL	150	4000K - CRI>80	25186	168	D1	○
7030PR4160GL	160	4000K - CRI>80	27563	172	D1	○
7030PR4175GL	175	4000K - CRI>80	29119	166	D1	○
7030PR4190GL	190	4000K - CRI>80	32664	172	D1	○

POLAR HP

mod.CR



Ottica

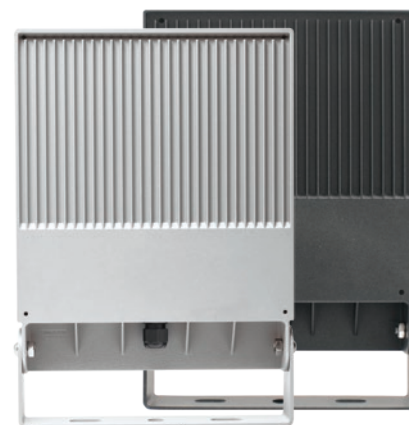
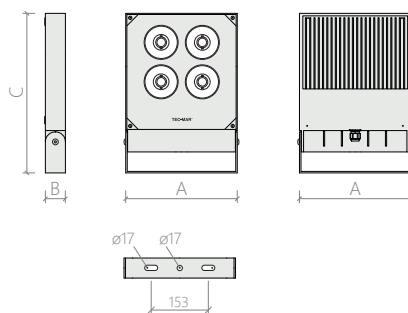
Riflettore concentrante 29° in alluminio satinato.

Optic

29° narrow beam matt satin aluminium reflector.

DIMENSIONI / DIMENSIONS

	A (mm)	B (mm)	C (mm)	Kg	☼
D1	295	55	425	5,6	0,126 m ²



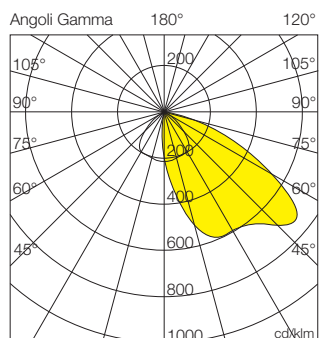
ESEMPIO CODIFICA CODICE 4000K - CRI>80 - ON/OFF
EXAMPLE OF ARTICLE CODING 4000K - CRI>80 - ON/OFF

PRESTAZIONI / PERFORMANCE

Code	W tot.	°K - CRI	Lm OUTPUT	Lm/W	dimension	Color
7030CR4040GL	40	4000K - CRI>80	7197	180	D1	○
7030CR4050GL	50	4000K - CRI>80	8943	179	D1	○
7030CR4060GL	60	4000K - CRI>80	10657	178	D1	○
7030CR4070GL	70	4000K - CRI>80	12325	176	D1	○
7030CR4080GL	80	4000K - CRI>80	14492	181	D1	○
7030CR4090GL	90	4000K - CRI>80	15965	177	D1	○
7030CR4100GL	100	4000K - CRI>80	17746	177	D1	○
7030CR4120GL	120	4000K - CRI>80	20351	170	D1	○
7030CR4130GL	130	4000K - CRI>80	21928	169	D1	○
7030CR4150GL	150	4000K - CRI>80	24254	162	D1	○
7030CR4160GL	160	4000K - CRI>80	26543	166	D1	○
7030CR4175GL	175	4000K - CRI>80	28042	160	D1	○
7030CR4190GL	190	4000K - CRI>80	31456	166	D1	○

POLAR HP

mod.AR



Ottica

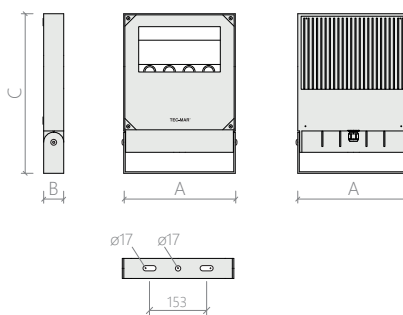
Riflettore asimmetrico 45° in alluminio satinato.

Optic

45° asymmetric beam matt satin aluminium reflector.

DIMENSIONI / DIMENSIONS

	A (mm)	B (mm)	C (mm)	Kg	↳
D1	295	55	425	5,6	0,126 m ²



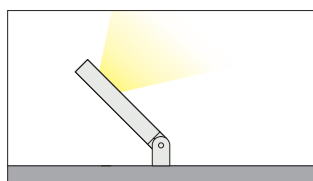
ESEMPIO CODIFICA CODICE 4000K - CRI>80 - ON/OFF
EXAMPLE OF ARTICLE CODING 4000K - CRI>80 - ON/OFF

PRESTAZIONI / PERFORMANCE

Code	W tot.	°K - CRI	Lm OUTPUT	Lm/W	dimension	Color
7030AR4040GL	40	4000K - CRI>80	7075	177	D1	○
7030AR4050GL	50	4000K - CRI>80	8791	176	D1	○
7030AR4060GL	60	4000K - CRI>80	10477	175	D1	○
7030AR4070GL	70	4000K - CRI>80	12116	173	D1	○
7030AR4080GL	80	4000K - CRI>80	14246	178	D1	○
7030AR4090GL	90	4000K - CRI>80	15695	174	D1	○
7030AR4100GL	100	4000K - CRI>80	17445	174	D1	○
7030AR4120GL	120	4000K - CRI>80	20007	167	D1	○
7030AR4130GL	130	4000K - CRI>80	21556	166	D1	○
7030AR4150GL	150	4000K - CRI>80	23843	159	D1	○
7030AR4160GL	160	4000K - CRI>80	26093	163	D1	○
7030AR4175GL	175	4000K - CRI>80	27567	158	D1	○
7030AR4190GL	190	4000K - CRI>80	30922	163	D1	○

INSTALLAZIONE / INSTALLATION

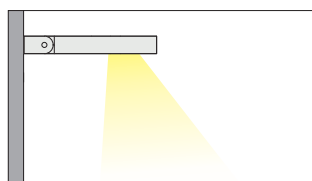
Installazione a terra Ground installation



Apparecchio adatto per installazione a terra.

Ground installation.

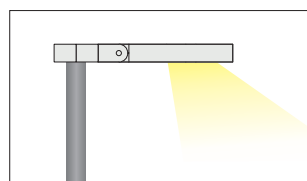
Installazione a parete Wall installation



Apparecchio adatto per installazione a parete.

Wall installation.

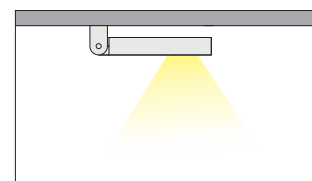
Installazione a palo Pole installation



Apparecchio adatto per installazione su palo Ø60 mm. (ACC215 - ACC219)

Top pole installation Ø60 mm. (ACC215 - ACC219)

Installazione a soffitto Ceiling installation

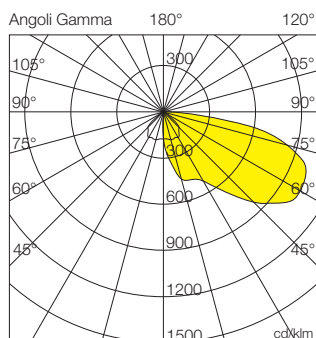


Apparecchio adatto per installazione a plafone.

Ceiling installation.

POLAR HP

mod.RR



Ottica

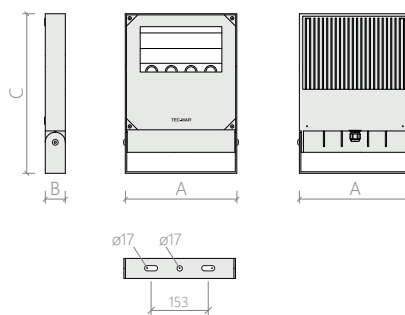
Riflettore asimmetrico 65° in alluminio satinato.

Optic

65° asymmetric beam matt satin aluminium reflector.

DIMENSIONI / DIMENSIONS

	A (mm)	B (mm)	C (mm)	Kg	☼
D1	295	55	425	5,6	0,126 m ²



ESEMPIO CODIFICA CODICE 4000K - CRI>80 - ON/OFF
EXAMPLE OF ARTICLE CODING 4000K - CRI>80 - ON/OFF

PRESTAZIONI / PERFORMANCE

Code	W tot.	°K - CRI	Lm OUTPUT	Lm/W	dimension	Color
7030RR4040GL	40	4000K - CRI>80	6750	169	D1	☉
7030RR4050GL	50	4000K - CRI>80	8387	168	D1	☉
7030RR4060GL	60	4000K - CRI>80	9995	167	D1	☉
7030RR4070GL	70	4000K - CRI>80	11559	165	D1	☉
7030RR4080GL	80	4000K - CRI>80	13591	170	D1	☉
7030RR4090GL	90	4000K - CRI>80	14973	166	D1	☉
7030RR4100GL	100	4000K - CRI>80	16643	166	D1	☉
7030RR4120GL	120	4000K - CRI>80	19087	159	D1	☉
7030RR4130GL	130	4000K - CRI>80	20565	158	D1	☉
7030RR4150GL	150	4000K - CRI>80	22747	152	D1	☉
7030RR4160GL	160	4000K - CRI>80	24893	156	D1	☉
7030RR4175GL	175	4000K - CRI>80	26299	150	D1	☉
7030RR4190GL	190	4000K - CRI>80	29501	155	D1	☉

ACCESSORI / ACCESSORIES



ACC069 Connettore stagno IP66 per connessione 2P+E (16A - 400V). Colore nero.
IP66 waterproof connector, 2P + E (16A - 400V). Color: black.

ACC071 Connettore stagno IP66 per connessione 4P+E (16A - 400V). Colore nero.
IP66 waterproof connector, 4P + E (16A - 400V). Color: black.

ACC140 Griglia di protezione 370 x 280 mm in acciaio cromato.
370 x 280 mm chromed steel protection grid.

ACC160 Staffa con trattamento marino resistente alle nebbie saline.
Bracket with marine treatment resistant to salt fog.

ACC215 Attacco testa palo, testa palo doppio, mezzo palo e mezzo palo doppio per proiettori colore silver.
Floodlights pole bracket. Installation: top-pole, double top-pole, half pole and dable half-pole. Silver color.

ACC219 Attacco testa palo, testa palo doppio, mezzo palo e mezzo palo doppio per proiettori colore antracite.
Floodlights pole bracket. Installation: top-pole, double top-pole, half pole and dable half-pole. Anthracite color.